

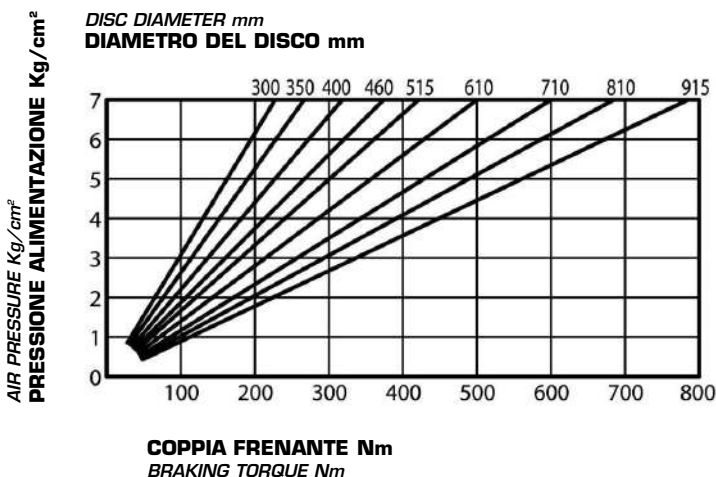
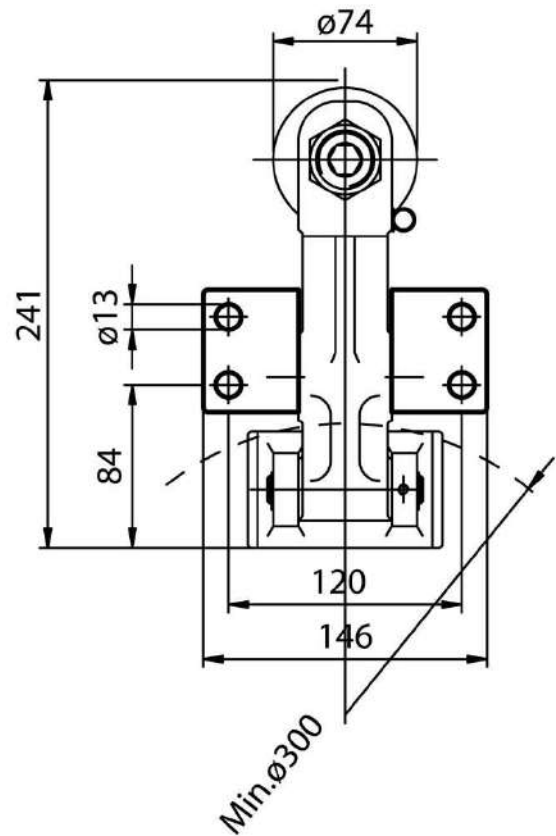
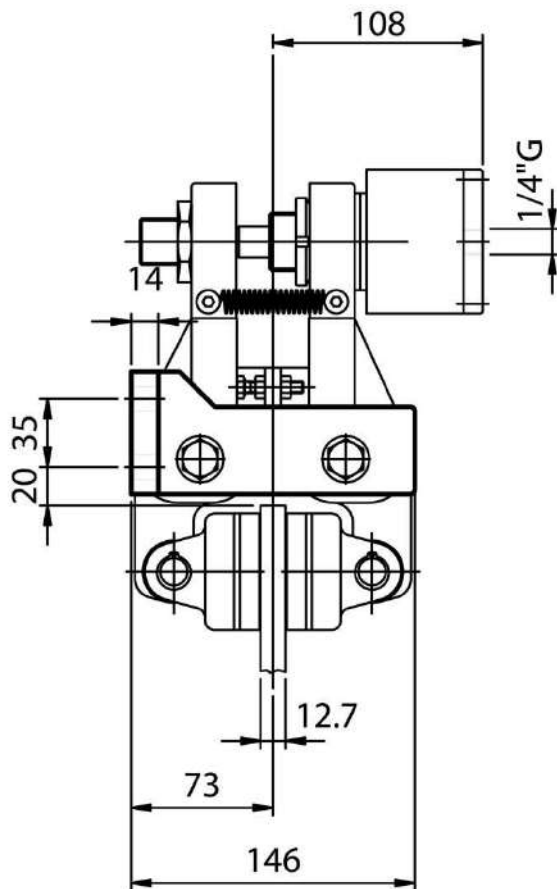
FRENO A PINZA SPH/05 - dimensioni e prestazioni

SPH/05 CALIPER BRAKE - dimension and performances

PINZE PNEUMATICHE POSITIVE

PNEUMATIC CALIPER BRAKES
air applied

COD. PPH1



DATI TECNICI

- Md forza frenante:
1843 N a 7 bar
- Coppia dinamica:
= Md · (raggio disco in m -0,033) = Nm
- Pressione max 7 bar
- Volume aria 0,007 dm³
- Peso 9,4 Kg

TECHNICAL DATA

- Md braking force:
1843 N at 7 bar
- Dynamic torque:
= Md · (disc radius in m -0,033) = Nm
- Max pressure 7 bar
- Air volume 0,007 dm³
- Weight 9,4 Kg

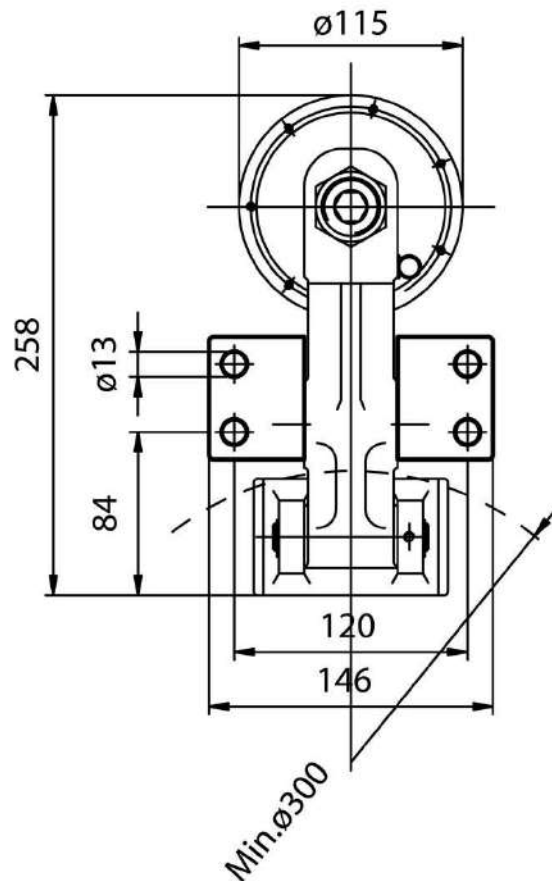
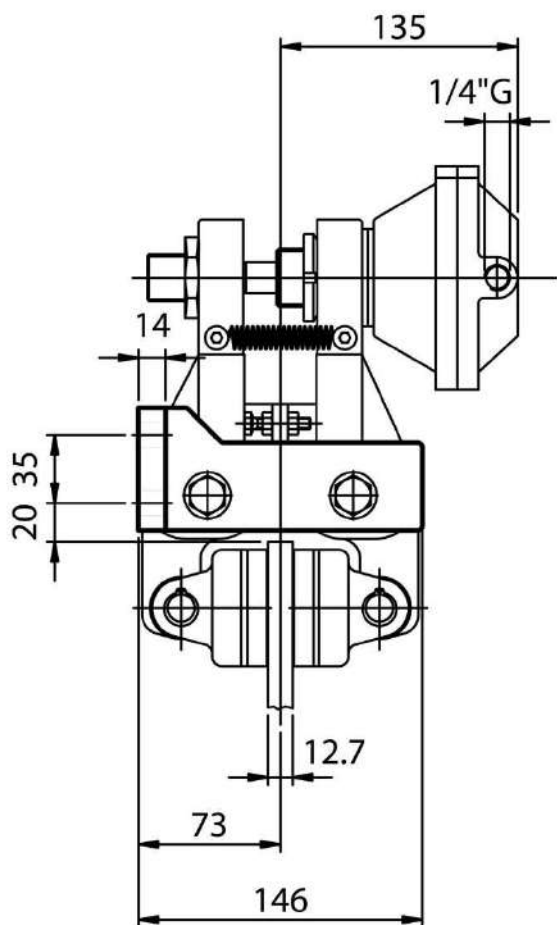
PINZE PNEUMATICHE POSITIVE

PNEUMATIC CALIPER BRAKES
air applied

FRENO A PINZA SPH/1 - dimensioni e prestazioni

SPH/1 CALIPER BRAKE - dimension and performances

COD. PPH2

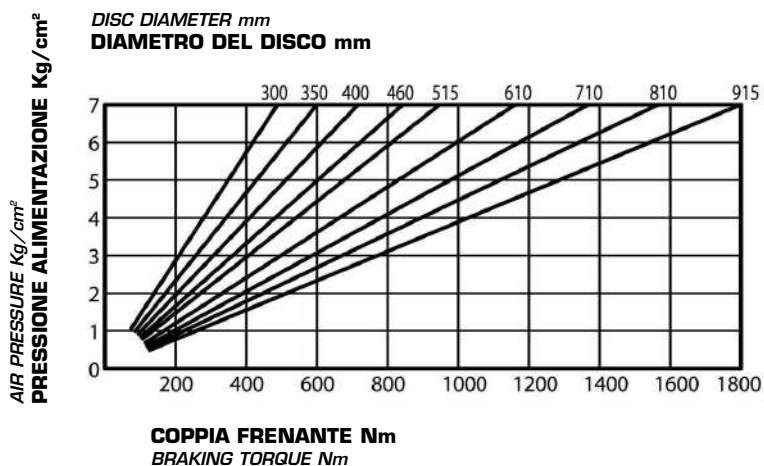


DATI TECNICI

- Md forza frenante:
4232 N a 7 bar
- Coppia dinamica:
= $Md \cdot (\text{raggio disco in m} - 0,033) = \text{Nm}$
- Pressione max 7 bar
- Volume aria 0,12 dm³
- Peso 10,7 Kg

TECHNICAL DATA

- Md braking force:
4232 N at 7 bar
- Dynamic torque:
= $Md \cdot (\text{disc radius in m} - 0,033) = \text{Nm}$
- Max pressure 7 bar
- Air volume 0,12 dm³
- Weight 10,7 Kg



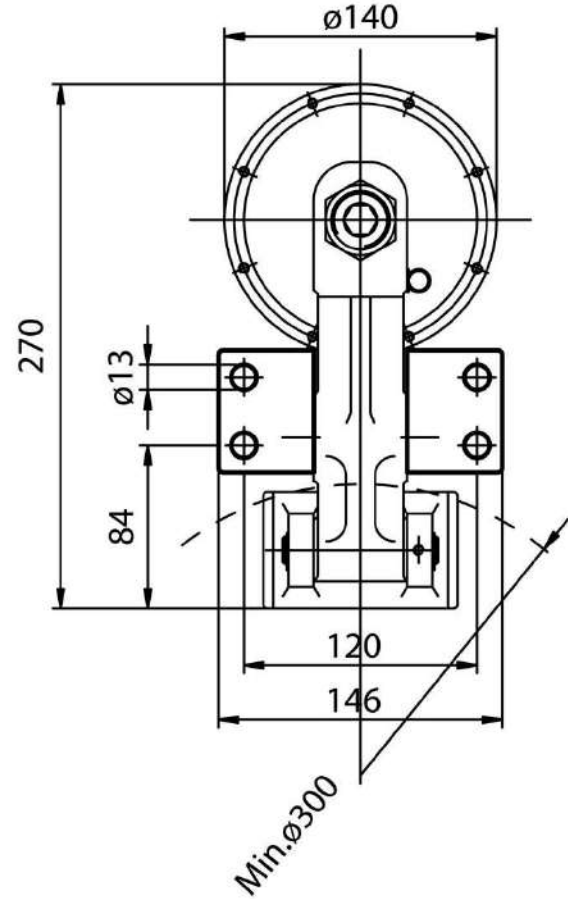
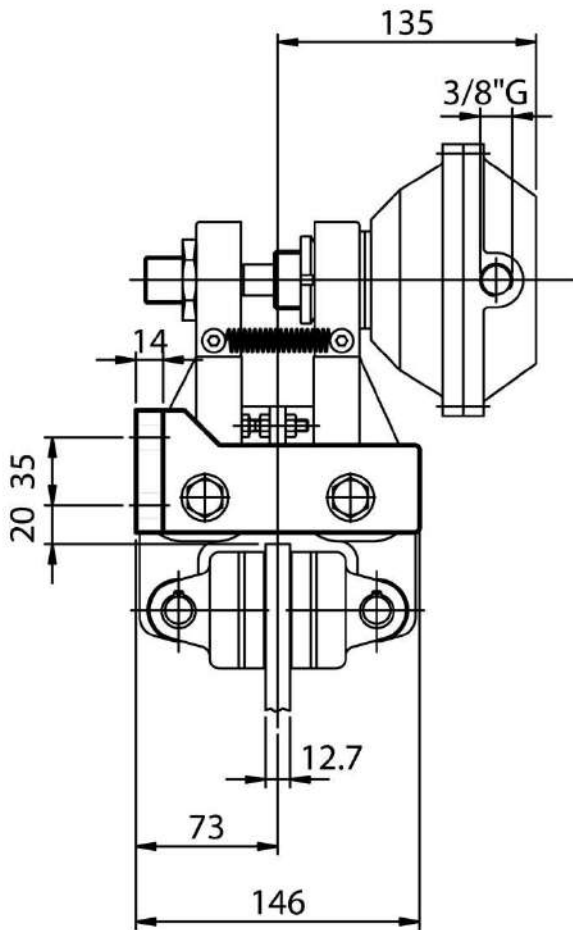
FRENO A PINZA SPH/2 - dimensioni e prestazioni

SPH/2 CALIPER BRAKE - dimension and performances

PINZE PNEUMATICHE POSITIVE

PNEUMATIC CALIPER BRAKES
air applied

COD. PPH3

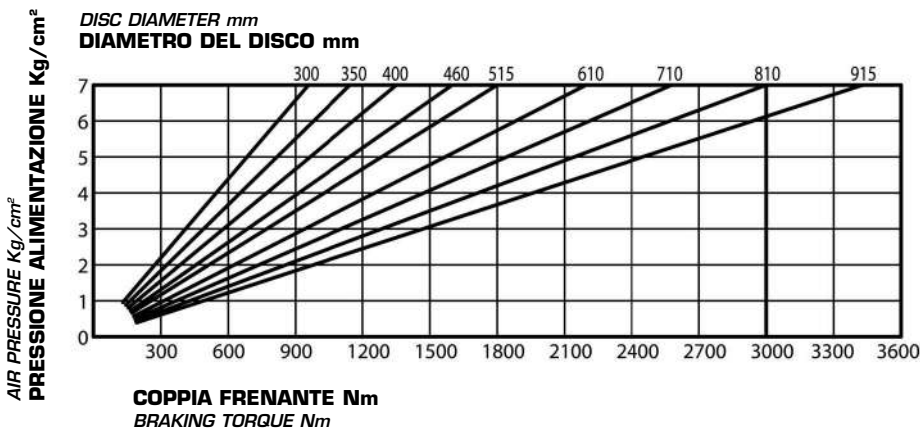


DATI TECNICI

- Md forza frenante:
8050 N a 7 bar
- Coppia dinamica:
= Md · (raggio disco in m -0,033) = Nm
- Pressione max 7 bar
- Volume aria 0,25 dm³
- Peso 11,8 Kg

TECHNICAL DATA

- Md braking force:
8050 N at 7 bar
- Dynamic torque:
= Md · (disc radius in m -0,033) = Nm
- Max pressure 7 bar
- Air volume 0,25 dm³
- Weight 11,8 Kg



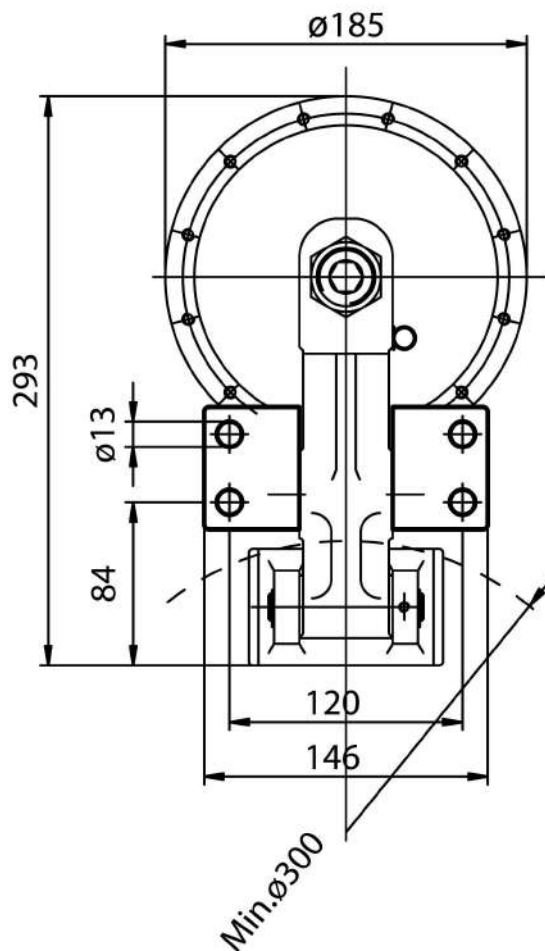
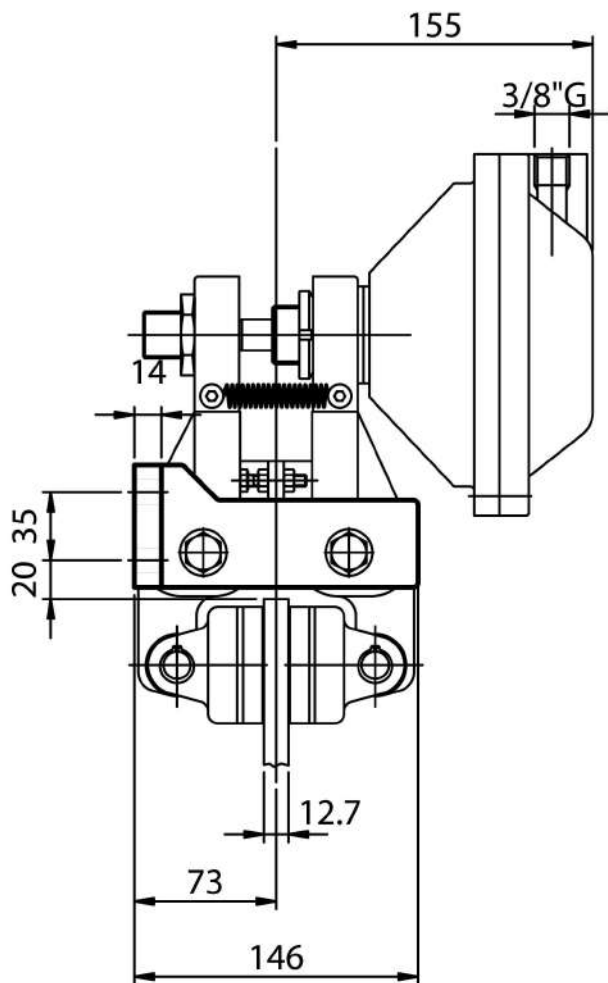
PINZE PNEUMATICHE POSITIVE

PNEUMATIC CALIPER BRAKES
air applied

FRENO A PINZA SPH/3 - dimensioni e prestazioni

SPH/3 CALIPER BRAKE - dimension and performances

COD. PPH4

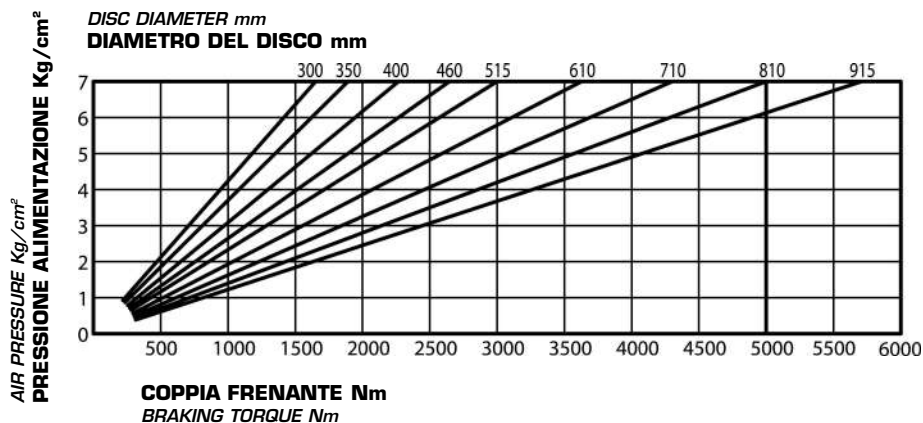


DATI TECNICI

- Md forza frenante:
13416 N a 7 bar
- Coppia dinamica:
= $Md \cdot (\text{raggio disco in m} - 0,033) = \text{Nm}$
- Pressione max 7 bar
- Volume aria 0,4 dm³
- Peso 15,5 Kg

TECHNICAL DATA

- Md braking force:
13416 N at 7 bar
- Dynamic torque:
= $Md \cdot (\text{disc radius in m} - 0,033) = \text{Nm}$
- Max pressure 7 bar
- Air volume 0,4 dm³
- Weight 15,5 Kg



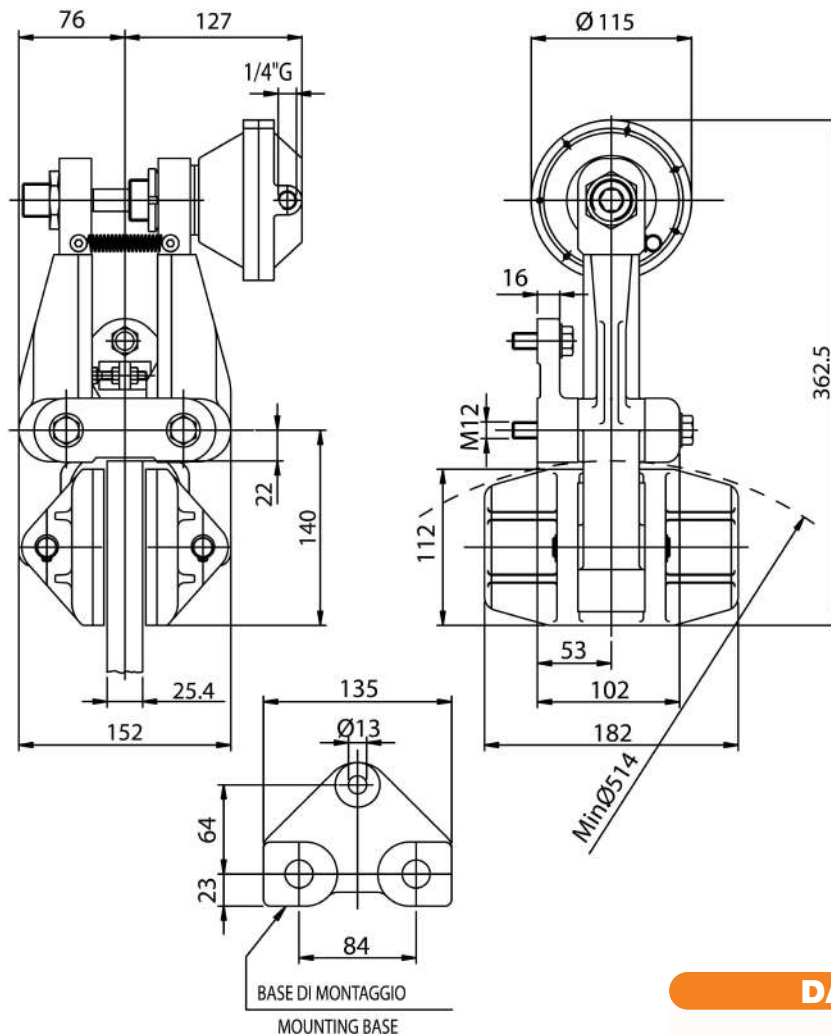
FRENO A PINZA SPL/1 - dimensioni e prestazioni

SPL/1 CALIPER BRAKE - dimension and performances

COD. PPL1

PINZE PNEUMATICHE POSITIVE

PNEUMATIC CALIPER BRAKES
air applied

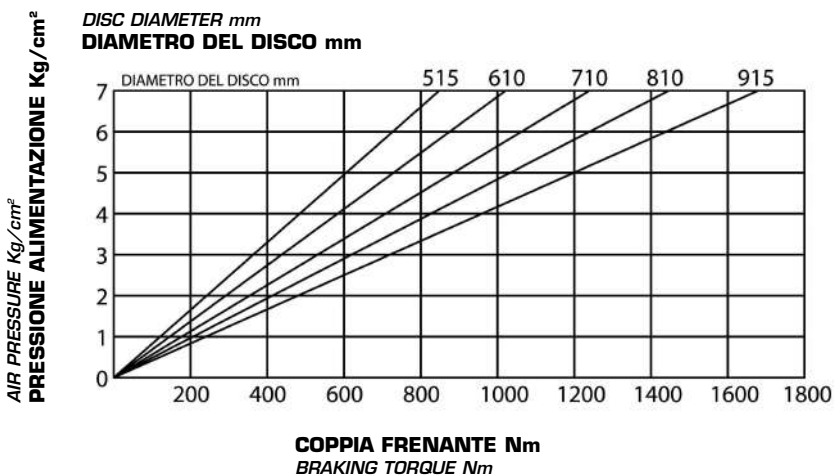


DATI TECNICI

- Md forza frenante:
4232 N a 7 bar
- Coppia dinamica:
= Md · (raggio disco in m -0,062) = Nm
- Pressione max 7 bar
- Volume aria 0,12 dm³
- Peso 16,2 Kg

TECHNICAL DATA

- Md braking force:
4232 N at 7 bar
- Dynamic torque:
= Md · (disc radius in m -0,062) = Nm
- Max pressure 7 bar
- Air volume 0,12 dm³
- Weight 16,2 Kg



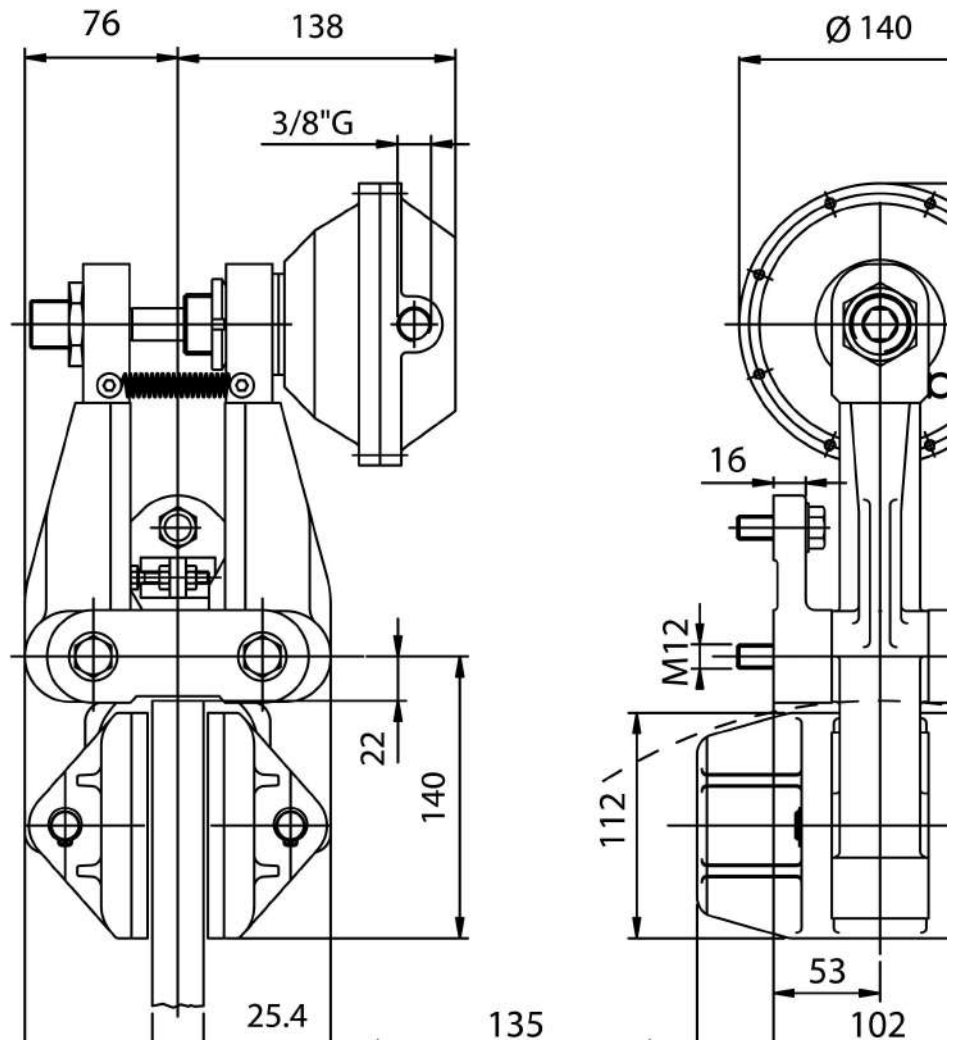
PINZE PNEUMATICHE POSITIVE

PNEUMATIC CALIPER BRAKES
air applied

FRENO A PINZA SPL/2 - dimensioni e prestazioni

SPL/2 CALIPER BRAKE - dimension and performances

COD. PPL2

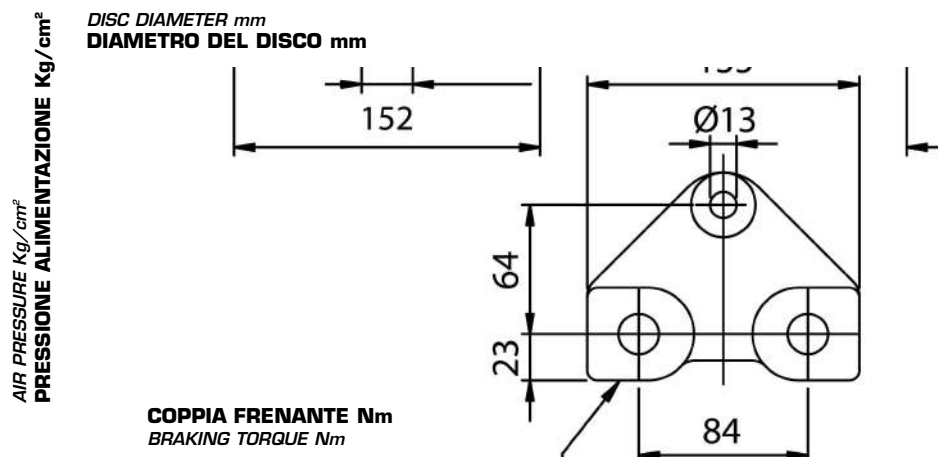


DATI TECNICI

- Md forza frenante:
8050 N a 7 bar
- Coppia dinamica:
= $Md \cdot (\text{raggio disco in m } -0,062) = \text{Nm}$
- Pressione max 7 bar
- Volume aria 0,25 dm³
- Peso 17,3 Kg

TECHNICAL DATA

- Md braking force:
8050 N at 7 bar
- Dynamic torque:
= $Md \cdot (\text{disc radius in m } -0,062) = \text{Nm}$
- Max pressure 7 bar
- Air volume 0,25 dm³
- Weight 17,3 Kg



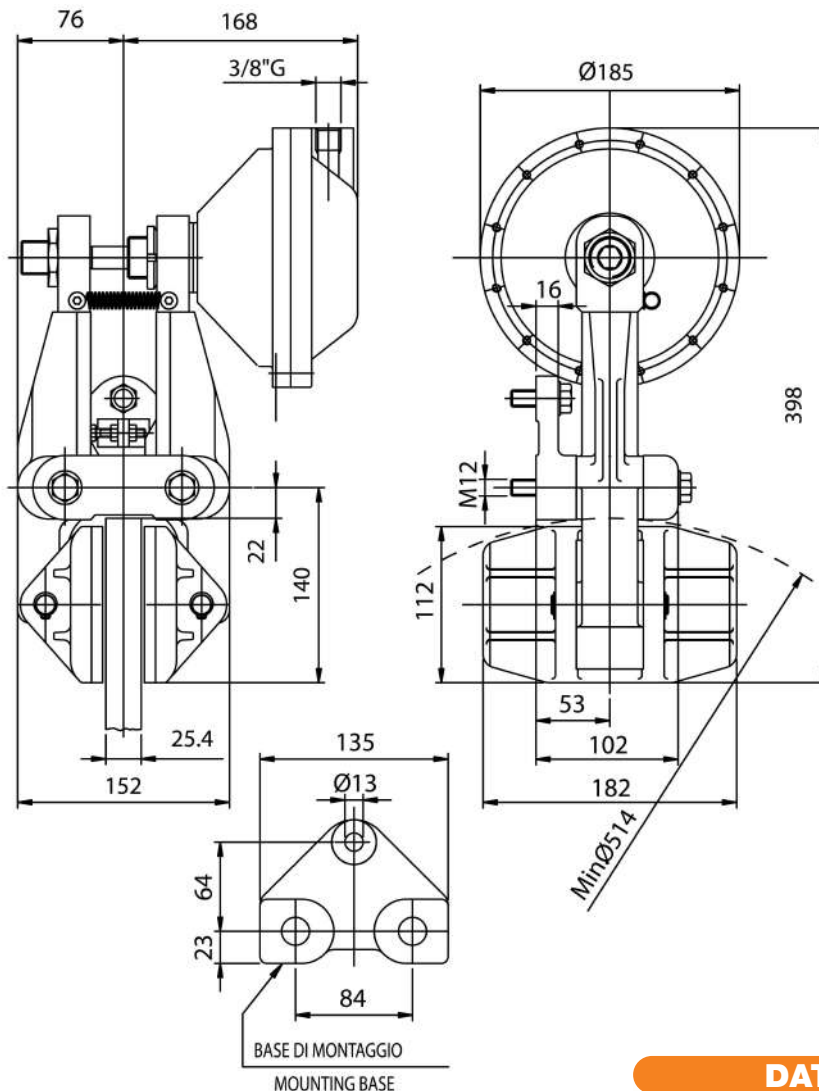
FRENO A PINZA SPL/3 - dimensioni e prestazioni

SPL/3 CALIPER BRAKE - dimension and performances

PINZE PNEUMATICHE POSITIVE

PNEUMATIC CALIPER BRAKES
air applied

COD. PPL 3

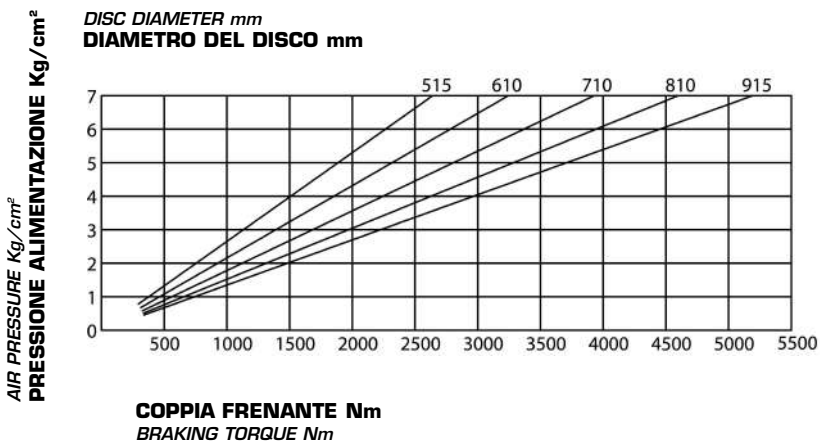


DATI TECNICI

- Md forza frenante:
13416 N a 7 bar
- Coppia dinamica:
= $Md \cdot (\text{raggio disco in m} - 0,062) = Nm$
- Pressione max 7 bar
- Volume aria 0,4 dm³
- Peso 21 Kg

TECHNICAL DATA

- Md braking force:
13416 N at 7 bar
- Dynamic torque:
= $Md \cdot (\text{disc radius in m} - 0,062) = Nm$
- Max pressure 7 bar
- Air volume 0,4 dm³
- Weight 21 Kg



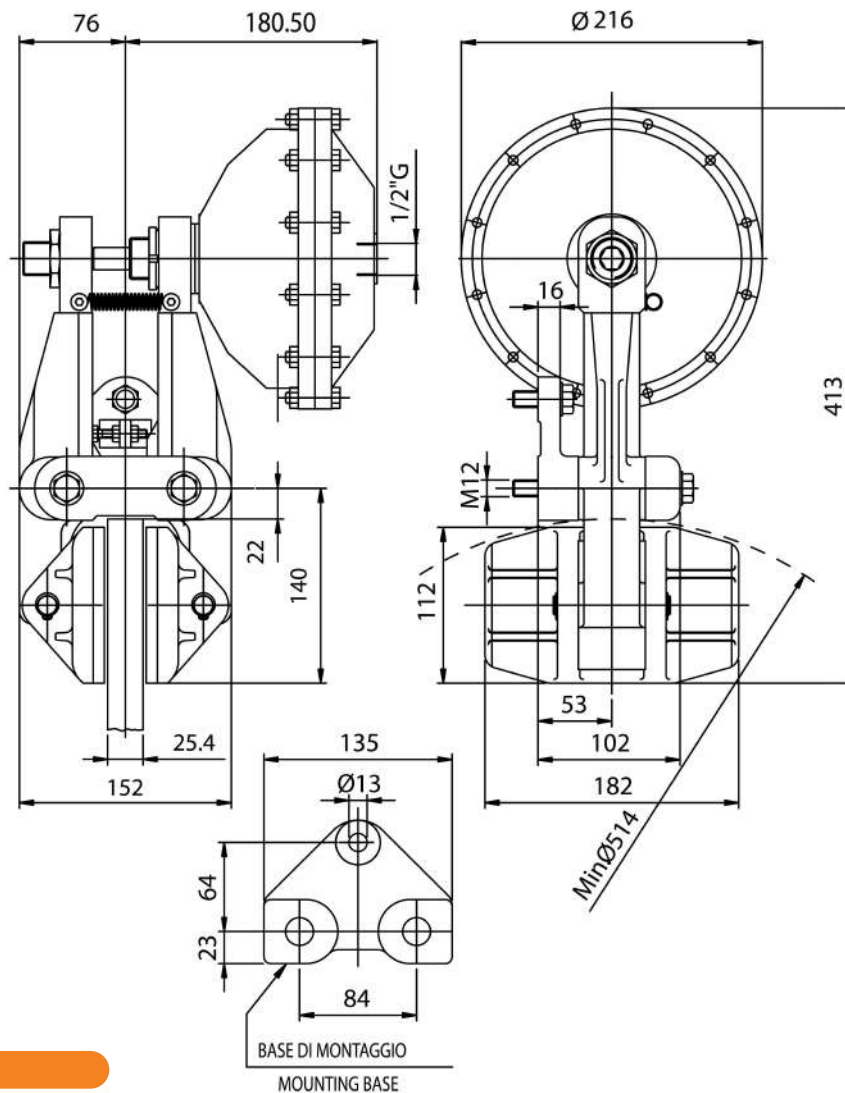
PINZE PNEUMATICHE POSITIVE

PNEUMATIC CALIPER BRAKES
air applied

COD. PPL 3,5

FRENO A PINZA SPL/3,5 - dimensioni e prestazioni

SPL/3,5 CALIPER BRAKE - dimension and performances

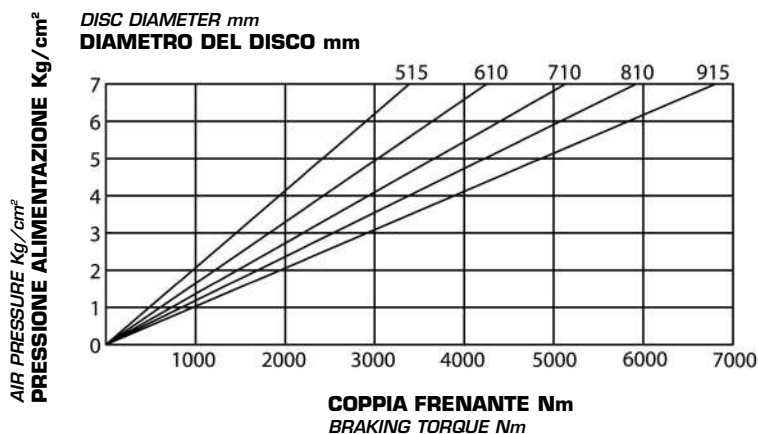


DATI TECNICI

- Md forza frenante:
17400 N a 7 bar
- Coppia dinamica:
= $Md \cdot (\text{raggio disco in m} - 0,062) = \text{Nm}$
- Pressione max 7 bar
- Volume aria 0,4 dm³
- Peso 19,5 Kg

TECHNICAL DATA

- Md braking force:
17400 N at 7 bar
- Dynamic torque:
= $Md \cdot (\text{disc radius in m} - 0,062) = \text{Nm}$
- Max pressure 7 bar
- Air volume 0,4 dm³
- Weight 19,5 Kg



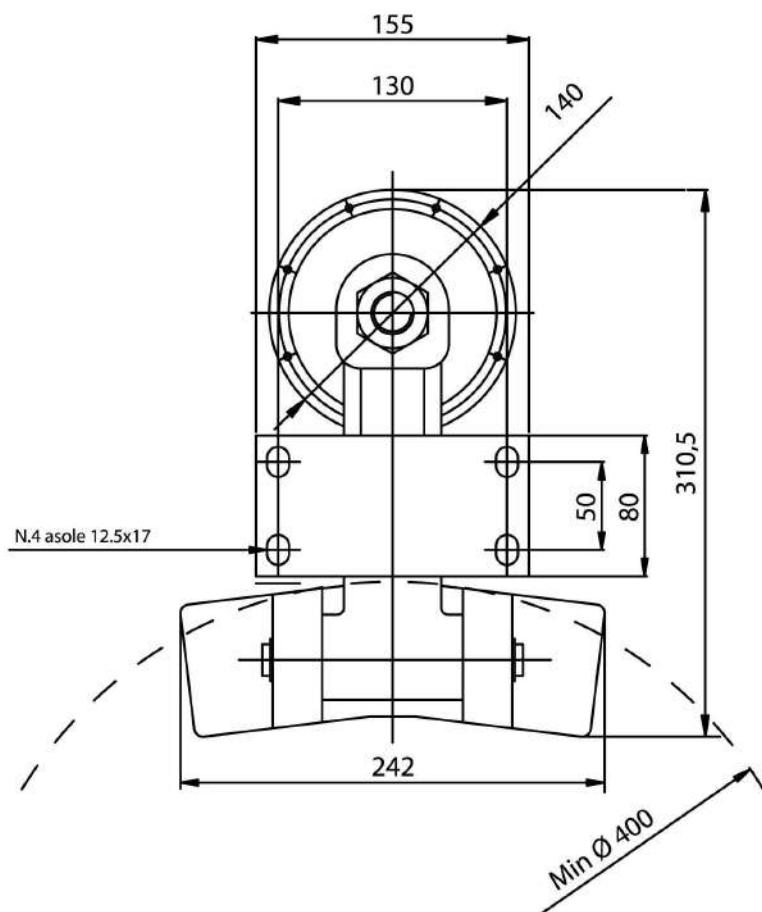
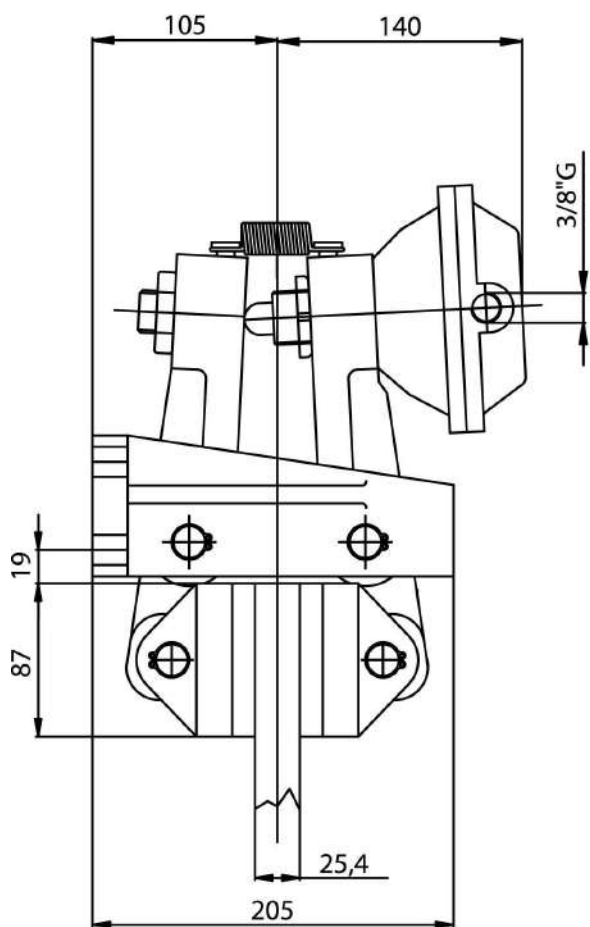
FRENO A PINZA SPF/2 - dimensioni e prestazioni

SPF/2 CALIPER BRAKE - dimension and performances

PINZE PNEUMATICHE POSITIVE

PNEUMATIC CALIPER BRAKES
air applied

COD. PPF2

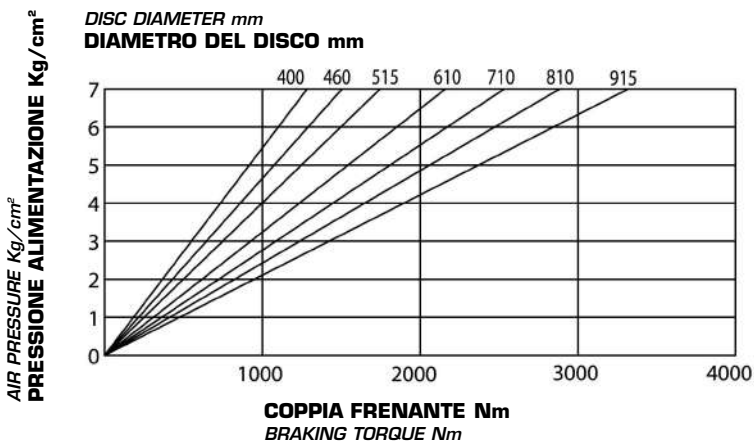


DATI TECNICI

- Md forza frenante:
8090 N a 7 bar
- Coppia dinamica:
= $Md \cdot (\text{raggio disco in m} - 0,045) = \text{Nm}$
- Pressione max 7 bar
- Volume aria 0,25 dm³
- Peso 22 Kg

TECHNICAL DATA

- Md braking force:
8090 N at 7 bar
- Dynamic torque:
= $Md \cdot (\text{disc radius in m} - 0,045) = \text{Nm}$
- Max pressure 7 bar
- Air volume 0,25 dm³
- Weight 22 Kg



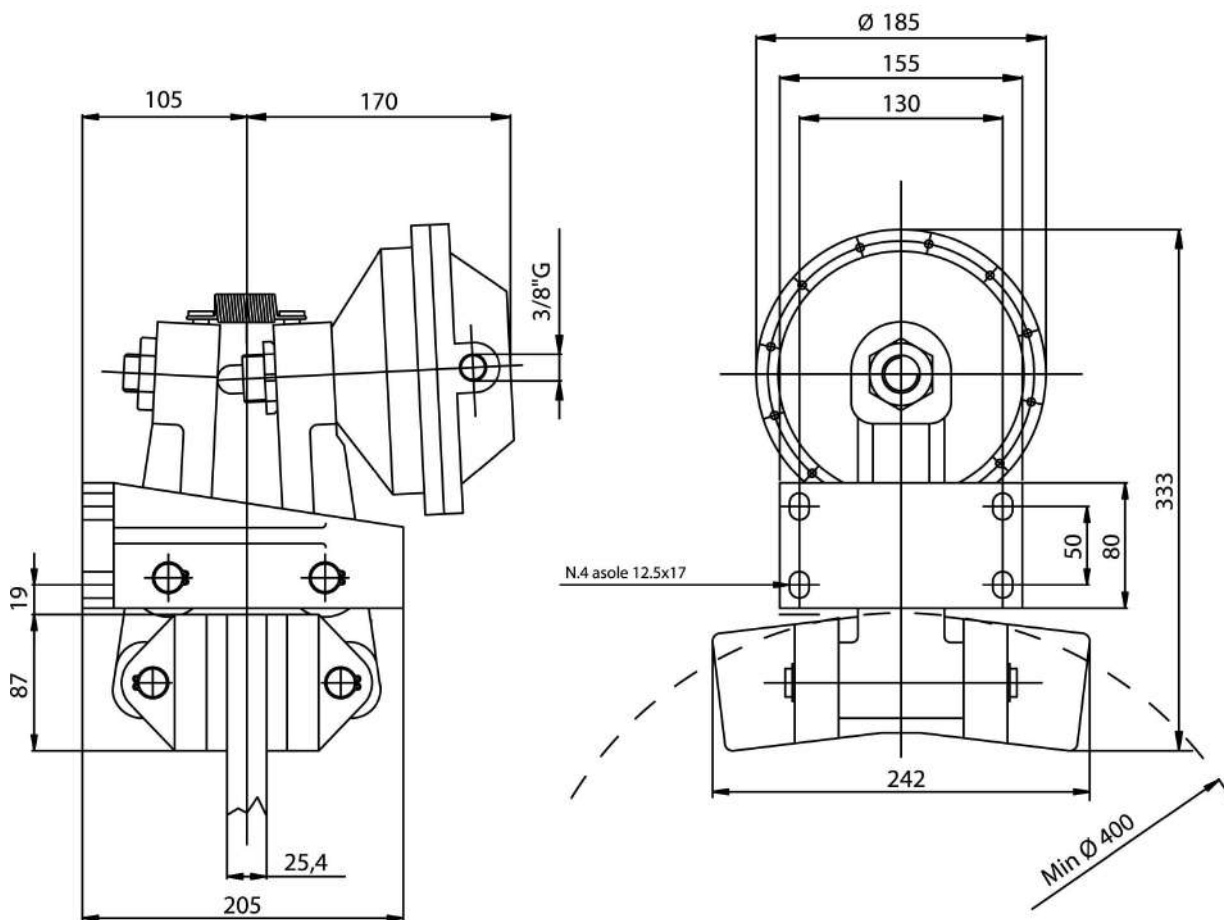
PINZE PNEUMATICHE POSITIVE

PNEUMATIC CALIPER BRAKES
air applied

FRENO A PINZA SPF/3- dimensioni e prestazioni

SPF/3 CALIPER BRAKE - dimension and performances

COD. PPF3

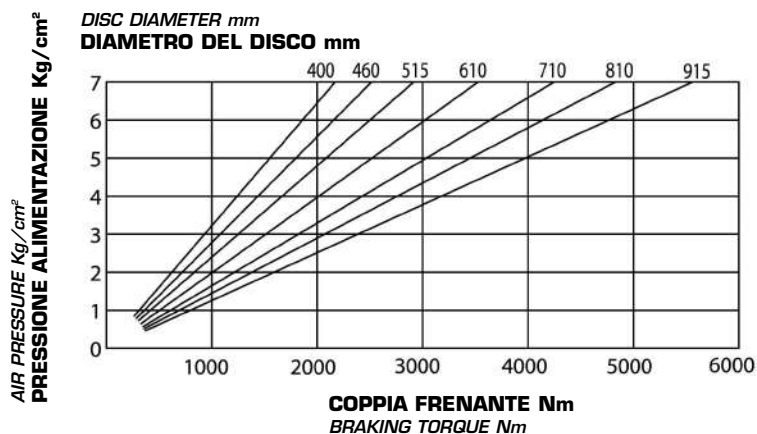


DATI TECNICI

- Md forza frenante:
13450 N a 7 bar
- Coppia dinamica:
= $Md \cdot (\text{raggio disco in m} - 0,045) = Nm$
- Pressione max 7 bar
- Volume aria 0,4 dm³
- Peso 26 Kg

TECHNICAL DATA

- Md braking force:
13450 N at 7 bar
- Dynamic torque:
= $Md \cdot (\text{disc radius in m} - 0,045) = Nm$
- Max pressure 7 bar
- Air volume 0,4 dm³
- Weight 26 Kg



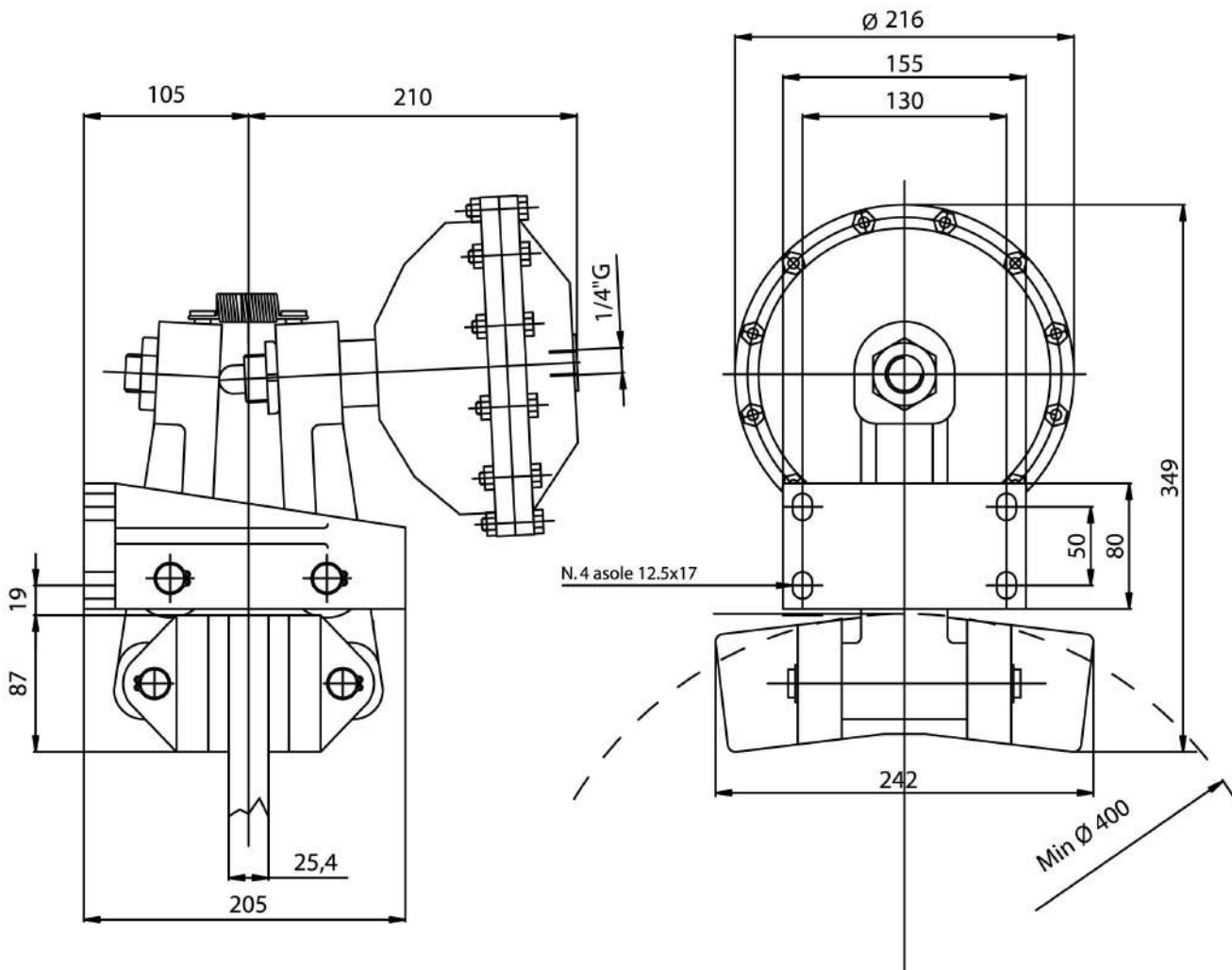
FRENO A PINZA SPF/3,5- dimensioni e prestazioni

SPF/3,5 CALIPER BRAKE - dimension and performances

COD. PPF3,5

PINZE PNEUMATICHE POSITIVE

PNEUMATIC CALIPER BRAKES
air applied

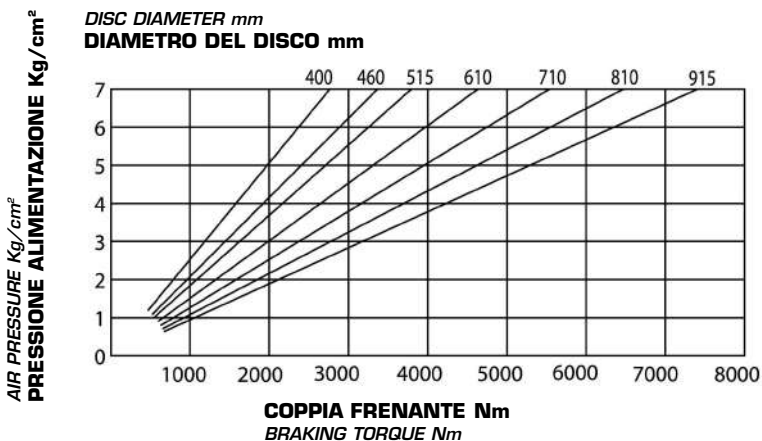


DATI TECNICI

- Md forza frenante:
17870 N a 7 bar
- Coppia dinamica:
= $Md \cdot (\text{raggio disco in m} - 0,045) = Nm$
- Pressione max 7 bar
- Volume aria 0,4 dm³
- Peso 24 Kg

TECHNICAL DATA

- Md braking force:
17870 N at 7 bar
- Dynamic torque:
= $Md \cdot (\text{disc radius in m} - 0,045) = Nm$
- Max pressure 7 bar
- Air volume 0,4 dm³
- Weight 24 Kg



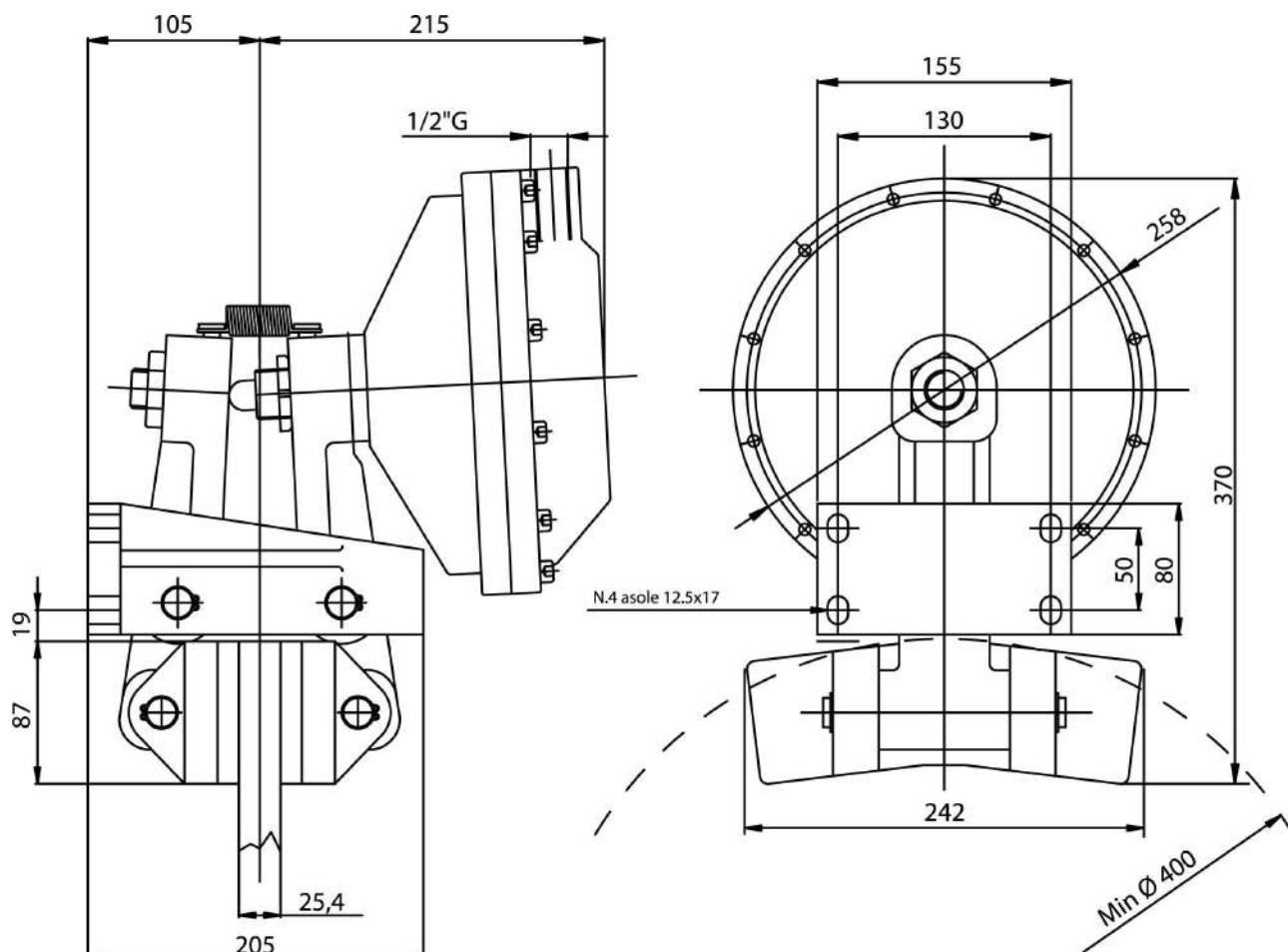
PINZE PNEUMATICHE POSITIVE

PNEUMATIC CALIPER BRAKES
air applied

FRENO A PINZA SPF/4- dimensioni e prestazioni

SPF/4 CALIPER BRAKE - dimension and performances

COD. PPF4

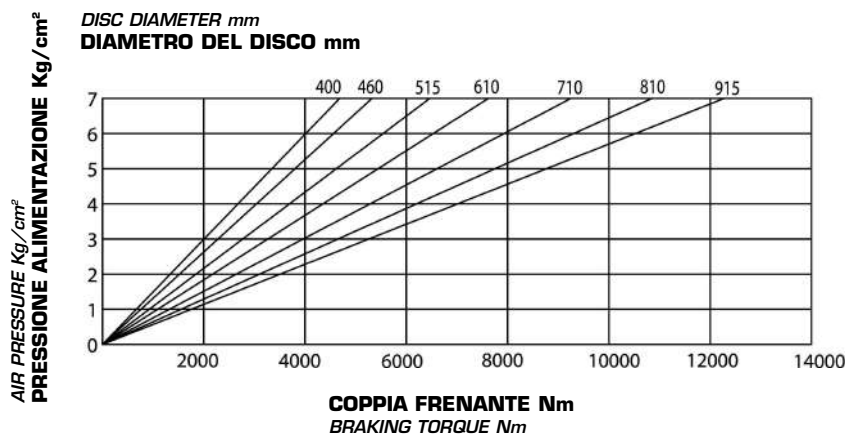


DATI TECNICI

- Md forza frenante:
29800 N a 7 bar
- Coppia dinamica:
= $Md \cdot (\text{raggio disco in m} - 0,045) = Nm$
- Pressione max 7 bar
- Volume aria 1 dm³
- Peso 35 Kg

TECHNICAL DATA

- Md braking force:
29800 N at 7 bar
- Dynamic torque:
= $Md \cdot (\text{disc radius in m} - 0,045) = Nm$
- Max pressure 7 bar
- Air volume 1 dm³
- Weight 35 Kg



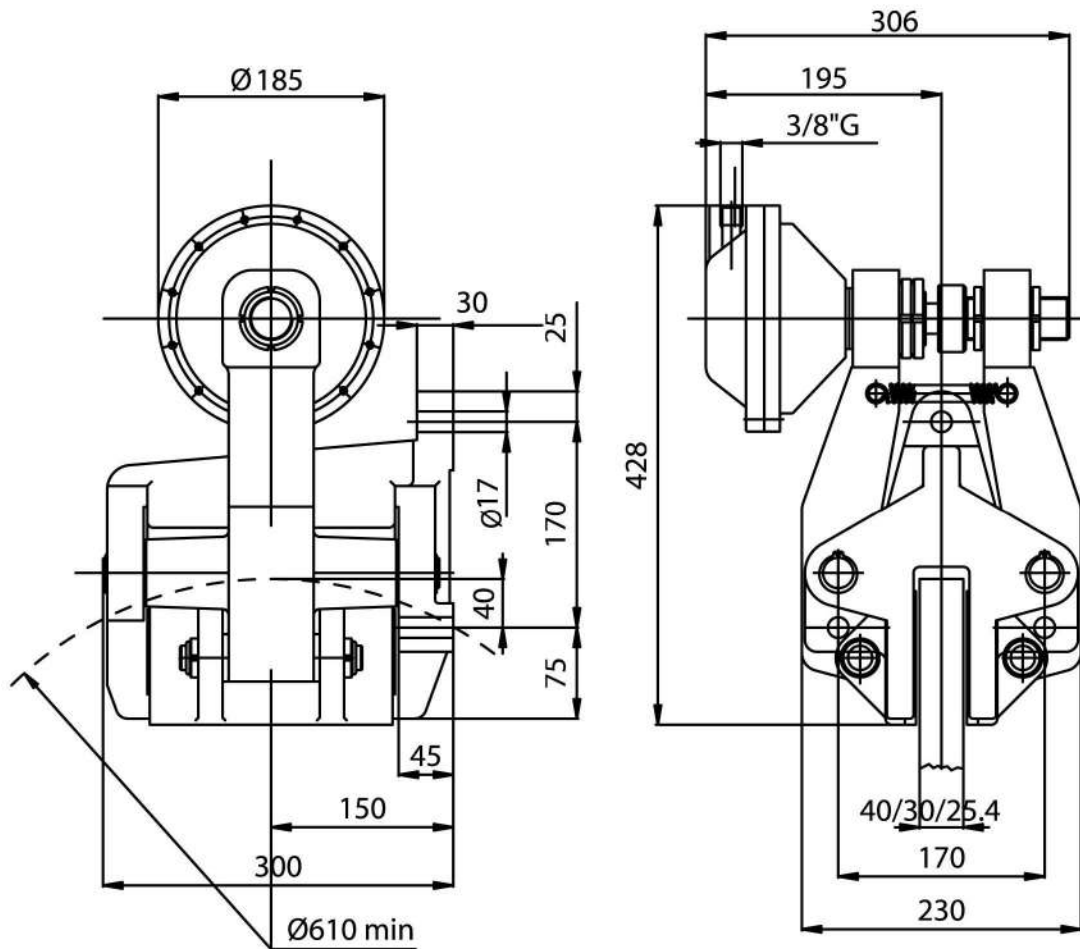
FRENO A PINZA SPR/3 - dimensioni e prestazioni

SPR/3 CALIPER BRAKE - dimension and performances

PINZE PNEUMATICHE POSITIVE

PNEUMATIC CALIPER BRAKES
air applied

COD. PPR3

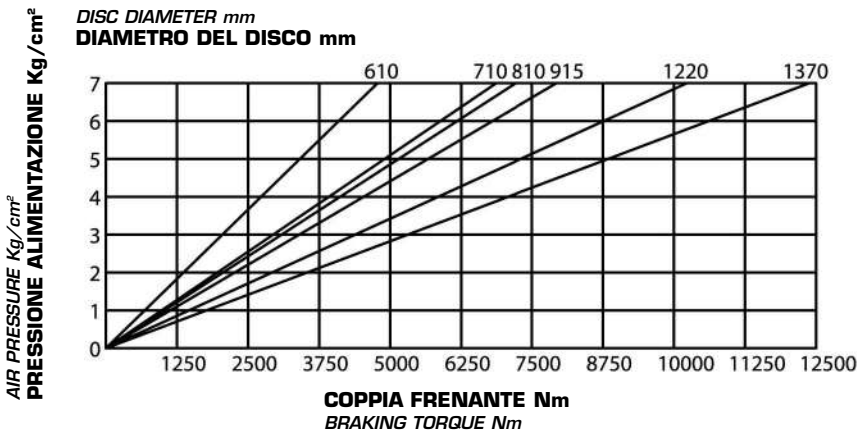


DATI TECNICI

- Md forza frenante:
20000 N a 7 bar
- Coppia dinamica:
= $Md \cdot (\text{raggio disco in m} - 0,065) = \text{Nm}$
- Pressione max 7 bar
- Volume aria 0,4 dm³
- Peso 50 Kg

TECHNICAL DATA

- Md braking force:
20000 N at 7 bar
- Dynamic torque:
= $Md \cdot (\text{disc radius in m} - 0,065) = \text{Nm}$
- Max pressure 7 bar
- Air volume 0,4 dm³
- Weight 50 Kg



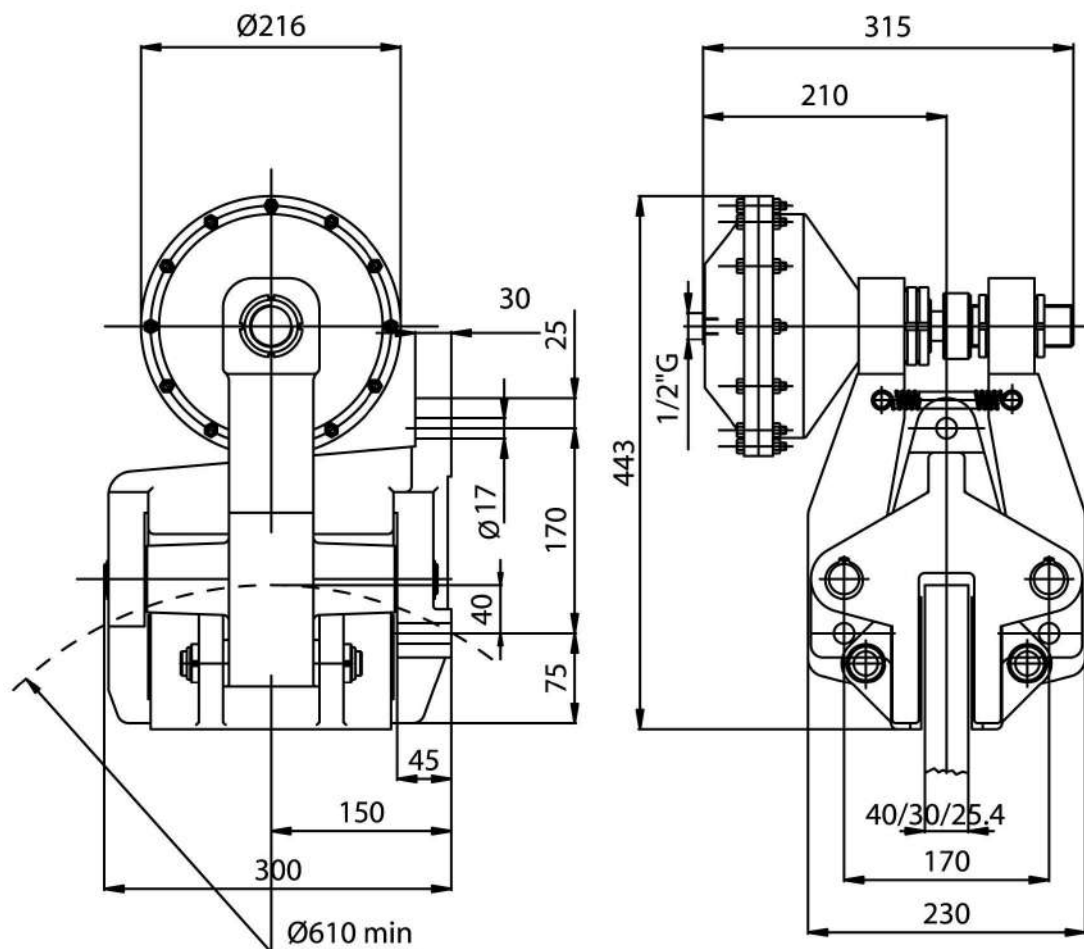
PINZE PNEUMATICHE POSITIVE

PNEUMATIC CALIPER BRAKES
air applied

COD. PPR3,5

FRENO A PINZA SPR/3,5- dimensioni e prestazioni

SPR/3,5 CALIPER BRAKE - dimension and performances

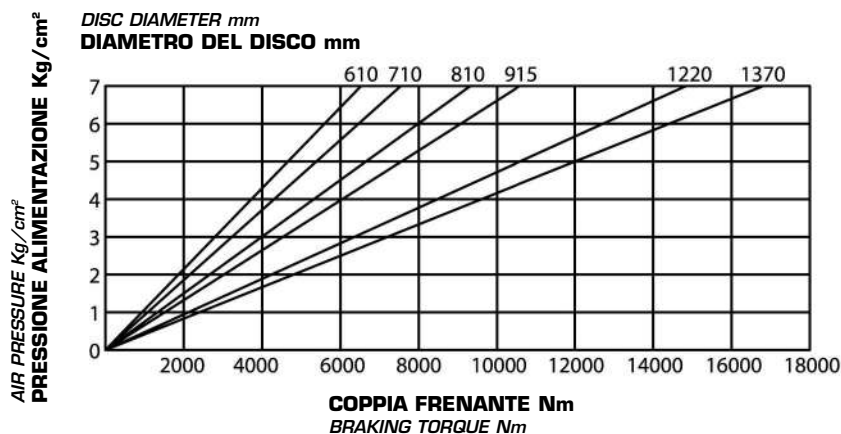


DATI TECNICI

- Md forza frenante:
27000 N a 7 bar
- Coppia dinamica:
= $Md \cdot (\text{raggio disco in m} - 0,065) = \text{Nm}$
- Pressione max 7 bar
- Volume aria 0,8 dm³
- Peso 48 Kg

TECHNICAL DATA

- Md braking force:
27000 N at 7 bar
- Dynamic torque:
= $Md \cdot (\text{disc radius in m} - 0,065) = \text{Nm}$
- Max pressure 7 bar
- Air volume 0,8 dm³
- Weight 48 Kg



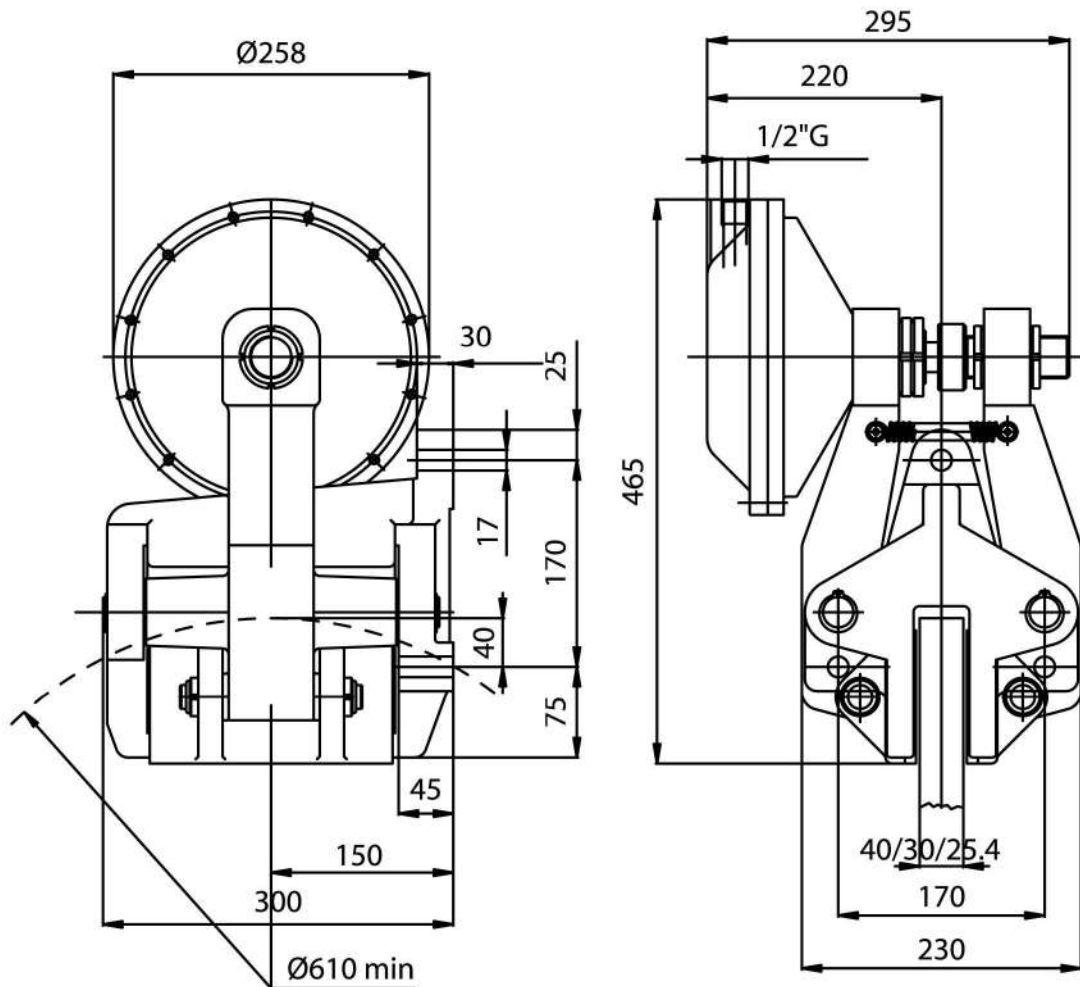
FRENO A PINZA SPR/4 - dimensioni e prestazioni

SPR/4 CALIPER BRAKE - dimension and performances

PINZE PNEUMATICHE POSITIVE

PNEUMATIC CALIPER BRAKES
air applied

COD. PPR

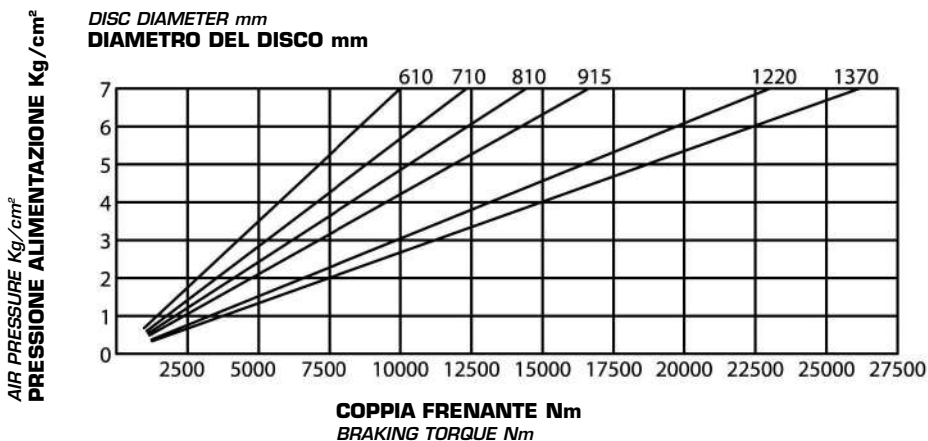


DATI TECNICI

- Md forza frenante:
42000 N a 7 bar
- Coppia dinamica:
= $Md \cdot (\text{raggio disco in m} - 0,065) = \text{Nm}$
- Pressione max 7 bar
- Volume aria 1 dm³
- Peso 59 Kg

TECHNICAL DATA

- Md braking force:
42000 N at 7 bar
- Dynamic torque:
= $Md \cdot (\text{disc radius in m} - 0,065) = \text{Nm}$
- Max pressure 7 bar
- Air volume 1 dm³
- Weight 59 Kg



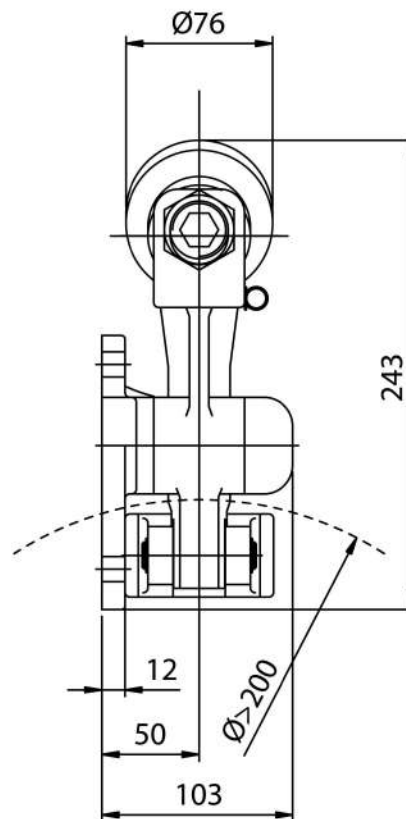
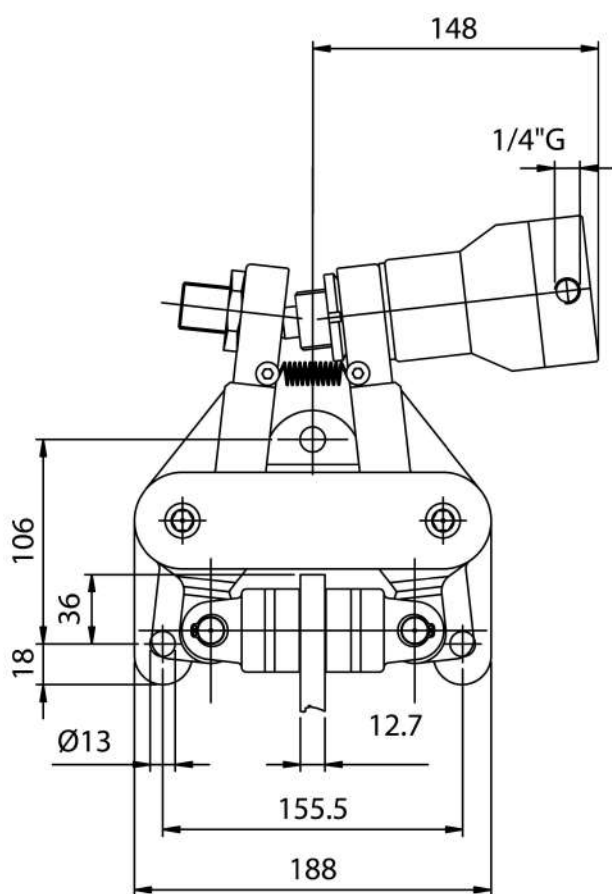
PINZE IDRAULICHE POSITIVE

HYDRAULICALLY ACTUATED
CALIPER BRAKES - oil applied

FRENO A PINZA SPG/Y - dimensioni e prestazioni

SPG/Y CALIPER BRAKE - dimension and performances

COD. PY1

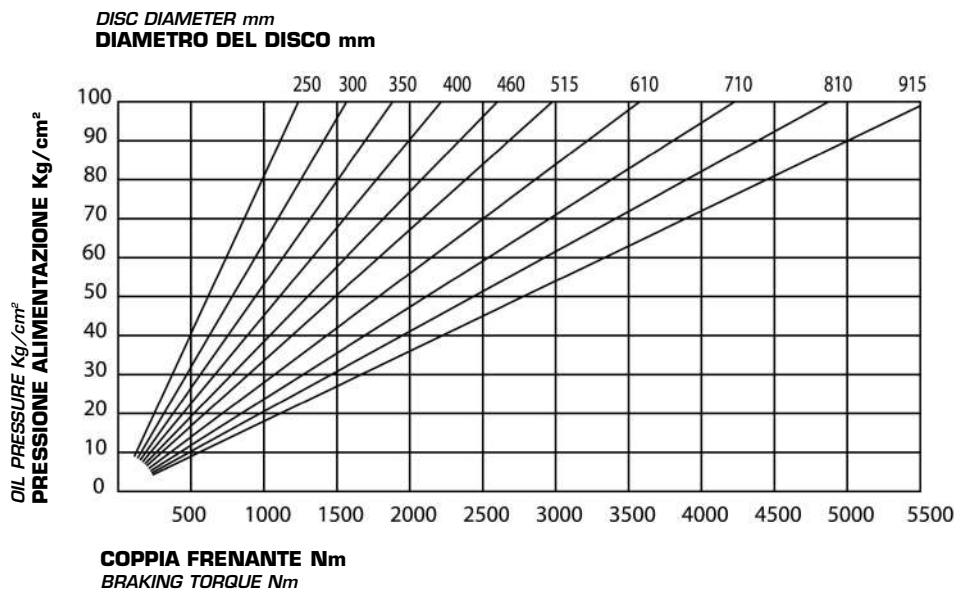


DATI TECNICI

- Md forza frenante:
13000 N a 100 bar
- Coppia dinamica:
= $Md \cdot (\text{raggio disco in m} - 0,030) = \text{Nm}$
- Pressione max 100 bar
- Volume olio 0,03 dm³
- Peso 10,8 Kg

TECHNICAL DATA

- Md braking force:
13000 N at 100 bar
- Dynamic torque:
= $Md \cdot (\text{disc radius in m} - 0,030) = \text{Nm}$
- Max pressure 100 bar
- Oil volume 0,03 dm³
- Weight 10,8 Kg



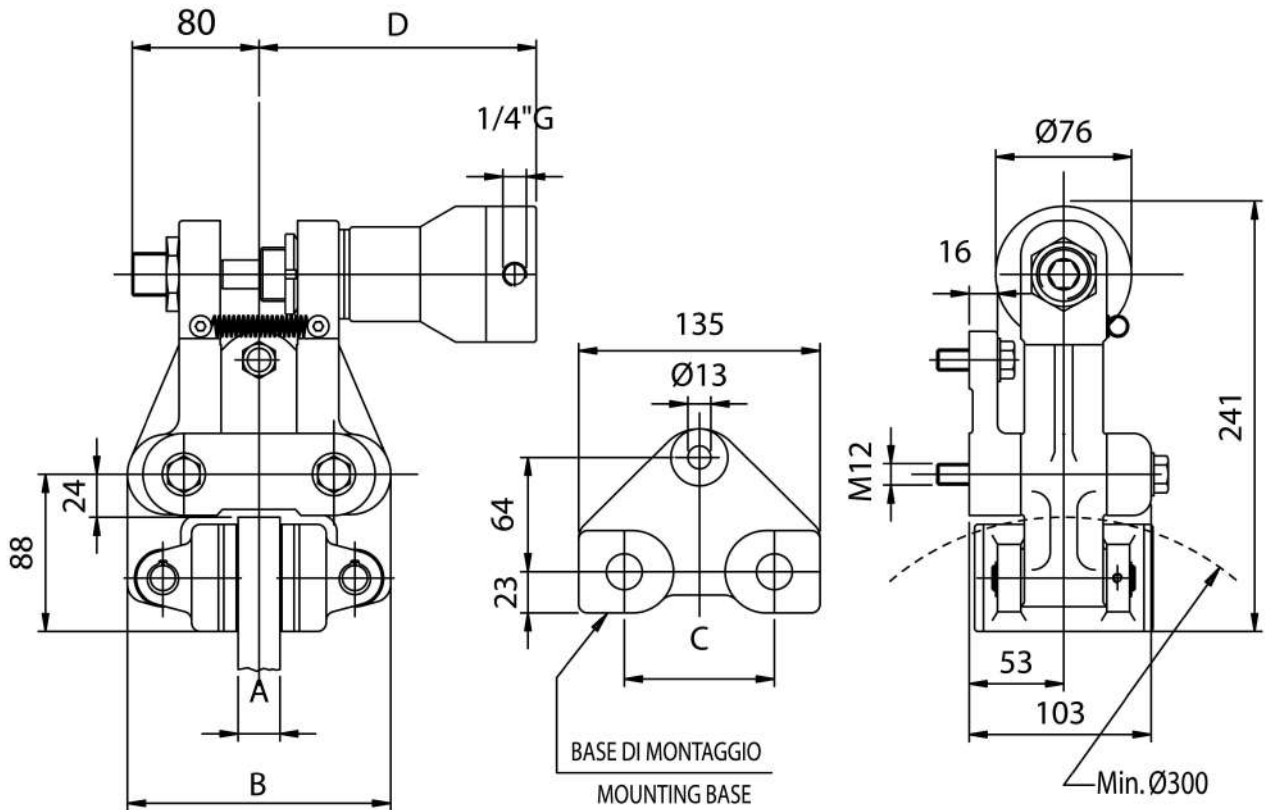
FRENO A PINZA SPX/Y - dimensioni e prestazioni

SPX/Y CALIPER BRAKE - dimension and performances

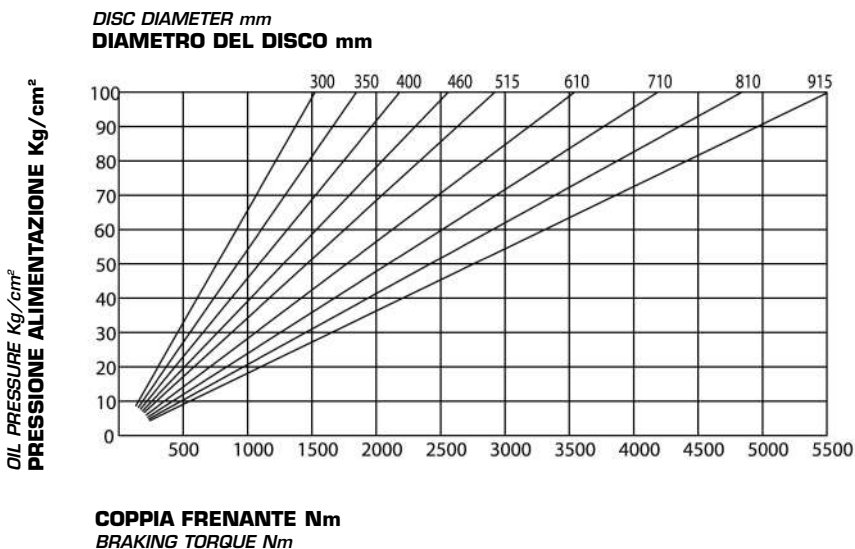
PINZE IDRAULICHE POSITIVE

HYDRAULICALLY ACTUATED
CALIPER BRAKES - oil applied

COD. PY2



A	12.7	25.4	30	40
B	142	155	160	170
C	75	84	75	84
D	146	146	157	166



DATI TECNICI

- Md forza frenante:
13000 N a 100 bar
- Coppia dinamica:
= $Md \cdot (\text{raggio disco in m} - 0,033) = Nm$
- Pressione max 100 bar
- Volume olio 0,03 dm³
- Peso 11,2 Kg

TECHNICAL DATA

- Md braking force:
13000 N at 100 bar
- Dynamic torque:
= $Md \cdot (\text{disc radius in m} - 0,033) = Nm$
- Max pressure 100 bar
- Oil volume 0,03 dm³
- Weight 11,2 Kg

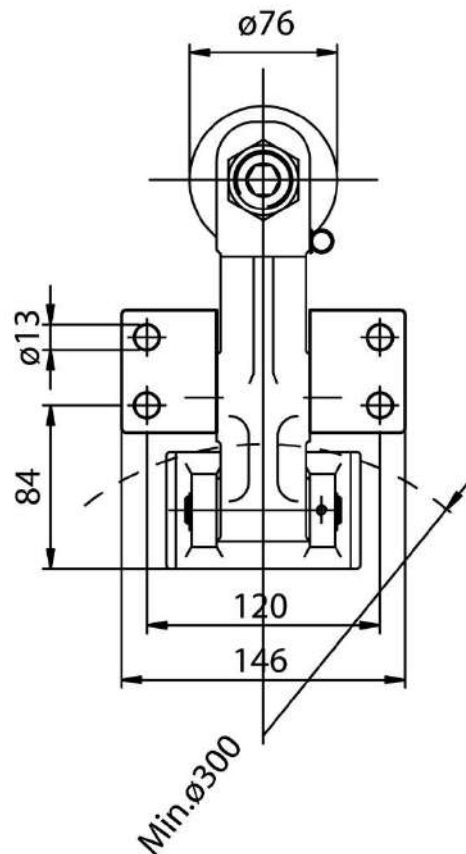
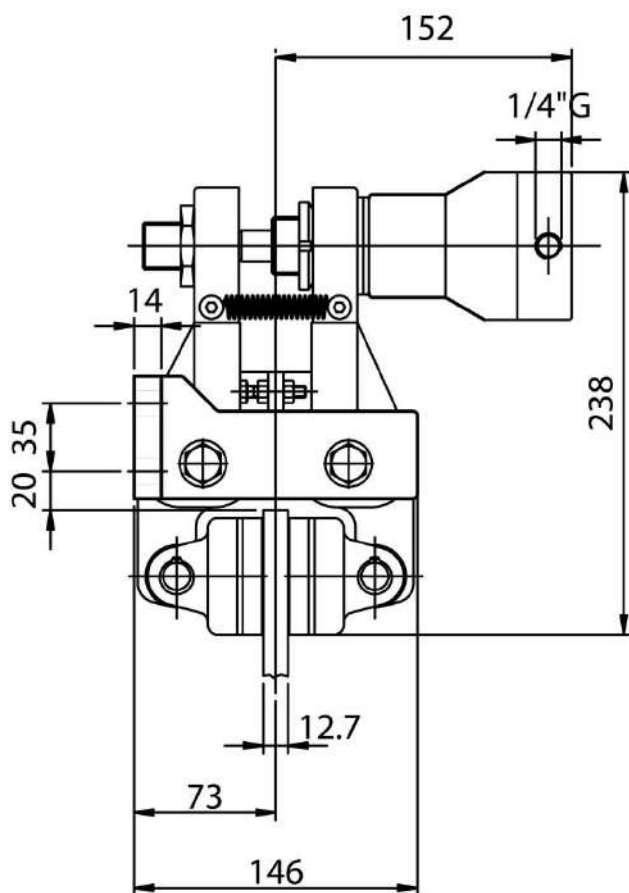
PINZE IDRAULICHE POSITIVE

HYDRAULICALLY ACTUATED
CALIPER BRAKES - oil applied

FRENO A PINZA SPH/Y - dimensioni e prestazioni

SPH/Y CALIPER BRAKE - dimension and performances

COD. PY3

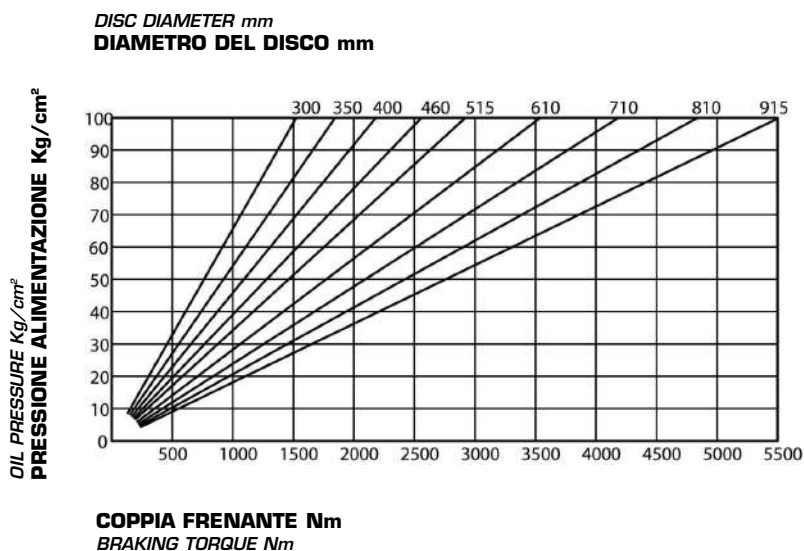


DATI TECNICI

- Md forza frenante:
13000 N a 100 bar
- Coppia dinamica:
= $Md \cdot (\text{raggio disco in m } -0,033) = \text{Nm}$
- Pressione max 100 bar
- Volume olio 0,03 dm³
- Peso 11,3 Kg

TECHNICAL DATA

- Md braking force:
13000 N at 100 bar
- Dynamic torque:
= $Md \cdot (\text{disc radius in m } -0,033) = \text{Nm}$
- Max pressure 100 bar
- Oil volume 0,03 dm³
- Weight 11,3 Kg



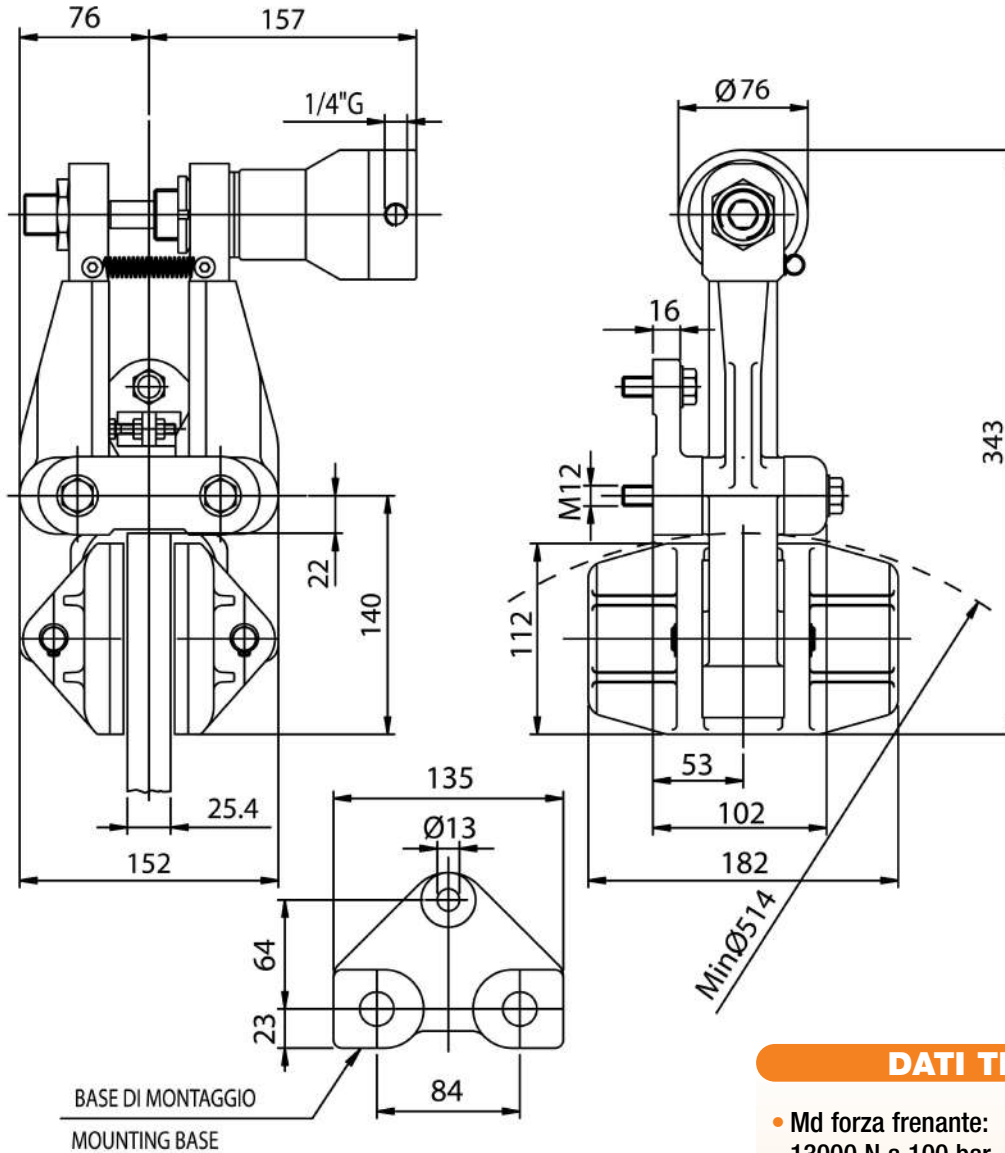
FRENO A PINZA SPL/Y - dimensioni e prestazioni

SPL/Y CALIPER BRAKE - dimension and performances

PINZE IDRAULICHE POSITIVE

HYDRAULICALLY ACTUATED
CALIPER BRAKES - oil applied

COD. PY4



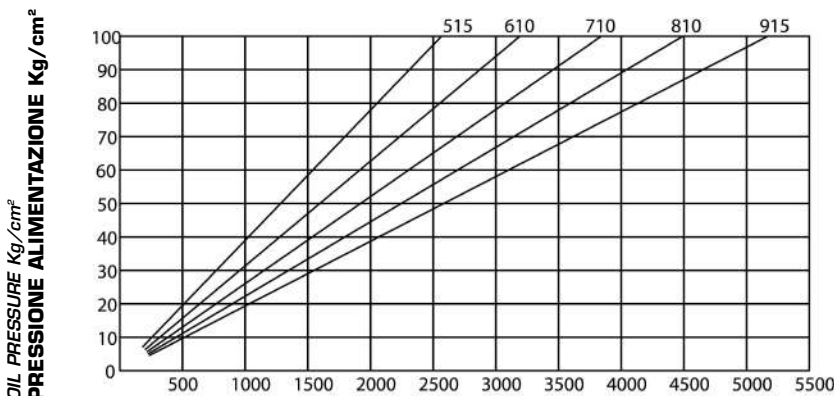
DATI TECNICI

- Md forza frenante:
13000 N a 100 bar
- Coppia dinamica:
= $Md \cdot (\text{raggio disco in m} - 0,062) = \text{Nm}$
- Pressione max 100 bar
- Volume olio 0,03 dm³
- Peso 16,8 Kg

TECHNICAL DATA

- *Md* braking force:
13000 N at 100 bar
- Dynamic torque:
= $Md \cdot (\text{disc radius in m} - 0,062) = \text{Nm}$
- Max pressure 100 bar
- Oil volume 0,03 dm³
- Weight 16,8 Kg

DISC DIAMETER mm
DIAMETRO DEL DISCO mm



COPPIA FRENANTE Nm
BRAKING TORQUE Nm

OIL PRESSURE Kg/cm²
PRESSIONE ALIMENTAZIONE Kg/cm²

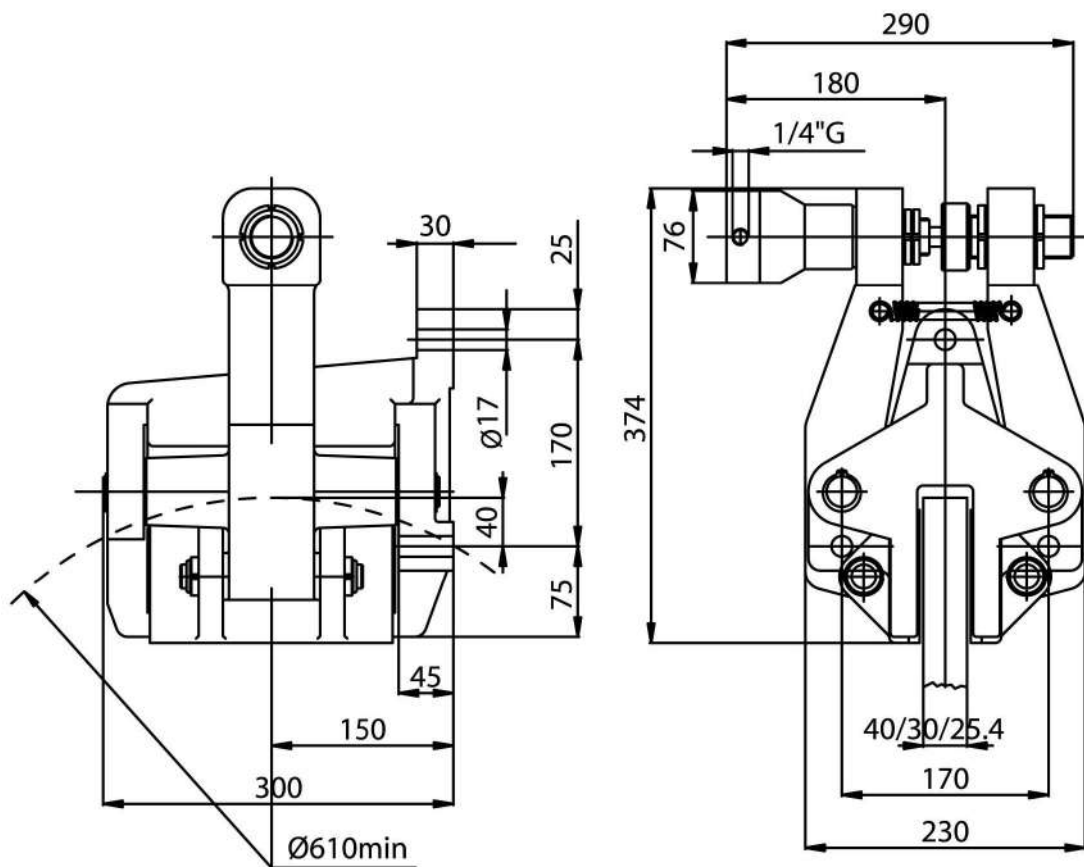
PINZE IDRAULICHE POSITIVE

HYDRAULICALLY ACTUATED
CALIPER BRAKES - oil applied

COD. PY5

FRENO A PINZA SPR/Y - dimensioni e prestazioni

SPR/Y CALIPER BRAKE - dimension and performances



DATI TECNICI

- Md forza frenante:
20500 N a 100 bar
- Coppia dinamica:
= $Md \cdot (\text{raggio disco in m } -0,065) = Nm$
- Pressione max 100 bar
- Volume olio 0,03 dm³
- Peso 46 Kg

TECHNICAL DATA

- Md braking force:
20500 N at 100 bar
- Dynamic torque:
= $Md \cdot (\text{disc radius in m } -0,065) = Nm$
- Max pressure 100 bar
- Oil volume 0,03 dm³
- Weight 46 Kg

